



# **MALTHOUSE PROMPT**

YOUTH AND EDUCATION



**SEASON**  
**— 2019**

**SEASON**  
—2019

**PHOTOGRAPHY /**

Season 2019 / Zan Wimberley  
Education / Sarah Walker

**ART DIRECTION & DESIGN /**

Hours After  
[hoursafter.com.au](http://hoursafter.com.au)

# WELCOME.

In 2019 Malthouse Theatre will present the epic story of *Cloudstreet* – our most ambitious production to date. Tim Winton's *Cloudstreet* is an Australian classic that has inspired readers for over 25 years. We are delighted to welcome you to this once-in-a-generation opportunity to see *Cloudstreet* brought to life on stage as a spectacular event.

Season 2019 is filled with fresh theatre that will be joyous, gripping, and leave you awestruck. With nine exciting mainstage productions, plus an extensive range of theatre workshops and programs on offer, these experiences will provide young audiences with more opportunities for inspiration, transformation, and adventure.

We very much look forward to seeing you at Malthouse Theatre in 2019.



**Matthew Lutton /**  
Artistic Director & Co-CEO



**Sarah Neal /**  
Executive Producer & Co-CEO

SEASON  
—2019



HA  
HO  
MO  
ON  
GR  
CO  
CL  
IS  
AN  
HA



AUNTED

HOUSE.

MONUMENT

OF LOVE.

GREAT

CONTINENT.

**CLOUDSTREET**

ALL THAT

AND MORE.

AUNTED



#CLOUDSTREET

SEASON  
—2019



6 MAY – 16 JUN

# CLOUDSTREET

## VCE PLAYLISTED

MERLYN  
THEATRE

ADAPTED BY /  
**Nick Enright**  
and **Justin Monjo**  
from the novel  
by **Tim Winton**

DIRECTION /  
**Matthew Lutton**

CAST INCLUDES /  
**Natasha Herbert**  
**Bert LaBonté**  
**Guy Simon**  
**Greg Stone**  
**Alison Whyte**

SET & COSTUME  
DESIGN /  
**Zoë Atkinson**

LIGHTING DESIGN /  
**Paul Jackson**

*Malthouse Theatre  
and Black Swan State  
Theatre Company present  
Cloudstreet. Cloudstreet  
was first commissioned by  
Company B, Belvoir and  
Black Swan State Theatre  
Company in 1998.*

*Cloudstreet* as a playscript was written in 1998, based on Tim Winton's celebrated novel. In 2019 director Matthew Lutton brings this play to the stage for a monumental new production, unprecedented in scale and ambition.

*Cloudstreet* follows the lives of two families – the Lambs and the Pickles – forced to live together in the same haunted house over a 25 year period. Spanning from World War II through to the 1960s, the play weaves their stories of shifting fortunes and relationships to tell a much larger story about life on the outskirts of one of the world's most isolated cities, in a country that is trying to grow up.

Encounter the epic story of *Cloudstreet* with the *Cloudstreet Experience*, where you will see the whole story in one event—with two intervals and a designated area for meal breaks.

Suitable for students from Years 9 to 12, *Cloudstreet* will be an extraordinary and memorable theatrical event.







# MORE OPPORTUNITIES TO ENGAGE WITH CLOUDSTREET

## POST-SHOW FORUM

with Matthew Lutton

Join Malthouse Theatre's Artistic Director Matthew Lutton on the Merlyn Theatre stage for an exclusive in-depth examination of *Cloudstreet*. Matthew will provide students with a unique insight into the rehearsal process and an exploration of how the director's vision is realised through stagecraft.

**DATES** Tuesday 14 May or  
Wednesday 15 May

**TIME** *Cloudstreet* Experience:  
10.30am (performance)  
3.10pm – 4.00pm (Post-show forum)

**COST** \$15 per student  
*Tickets to Cloudstreet performance  
are sold separately.*

## REVISIT THE PLAY

This is the chance for an extensive revision of Malthouse Theatre's production of *Cloudstreet*, with a close analysis of archival footage and facilitated discussions about the play in preparation for the VCE Written Examination.

**DATE** Tuesday 24 Sep  
**TIME** 11.00am – 1.00pm  
**COST** \$25 per student (Metro)  
\$20 per student (Non-metro)  
*Accompanying teachers free.*



SEASON  
2019

# BARBARA AND THE CAMP DOGS



7 FEB – 3 MAR

HIGHLIGHT OF  
SEASON 2019

MERLYN  
THEATRE

BY / Ursula Yovich  
Alana Valentine

DIRECTION /  
Leticia Cáceres

CAST /  
Troy Brady  
Elaine Crombie  
Ursula Yovich

SONGS BY /  
Alana Valentine  
Ursula Yovich  
Adm Ventoura

SET DESIGN /  
Stephen Curtis

COSTUME DESIGN /  
Chloe Greaves

LIGHTING DESIGN /  
Karen Norris

SOUND DESIGN /  
Steve Toulmin

MUSICIANS /  
Sorcha Albuquerque  
Jessica Dunn  
Michelle Vincent

*Malthouse Theatre presents  
a Belvoir production.  
Indigenous theatre at  
Belvoir supported by  
The Balnaves Foundation.  
Presented in association  
with Vicki Gordon Music.  
Proudly supported by  
Art Series Hotels.*



## ‘BLOW[S] THE ROOF OFF OUR COMPLACENCY’

– Time Out

Barbara fronts a pub rock band, captivating crowds with cutting wit, diabolical rage and unrepentant sexuality. She may be fun, she may be dangerous, and she may be speeding headlong towards a dead end.

Rene, her ‘sister’, hears that Mum is sick. So, they set out on a wrenching road trip to reconnect with their disconnected family. The roar of motorbikes and growling dialogue are intercut with guitar-driven arias.

Malthouse Theatre’s Merlyn stage is made over into a sticky-carpet band venue. Ursula Yovich (*Heart is a Wasteland*) and Elaine Crombie (*Blaque Showgirls*) are ready to rock out again after a sell-out season in Sydney. Their powerful vocals are accompanied, live, by an all-female three-piece outfit.

So, take a stool at the bar and amp up for a noisy night with *Barbara and the Camp Dogs*.

#BARBARAANDTHECAMPDOGS

SEASON  
—2019

# AUSTRALIAN REALNESS





16 AUG – 8 SEP

## HIGHLIGHT OF SEASON 2019

MERLYN  
THEATRE

BY / **Zoey Dawson**

DIRECTION /

**Janice Muller**

CAST INCLUDES /

**Linda Cropper**

LIGHTING DESIGN /

**Amelia Lever-Davidson**

SOUND /

**James Paul**

SET & COSTUME

DESIGN /

**Romanie Harper**

*Commissioned by  
Malthouse Theatre  
through the support of  
the Malcolm Robertson  
Foundation. Australian  
Realness was developed  
with assistance from  
the Monash University  
Centre for Theatre and  
Performance, Artist in  
Residence Program.*



## A BOGAN AND BOURGEOIS BATTLE FOR A SUBURBAN BACKYARD.

The summery embrace of an Aussie family Christmas. Familiar characters pop the cork on mid-range bubbly for a raucous celebration of festive traditions. But, all is not well.

As adult kids regress to the parental homestead, Mum and Dad's apparent wealth is waning. They've sold the Audi. There are fewer presents. They're even renting out the back shed to supplement their income.

There's a bunch of yobbos in the backyard!

Following a Christmas dinner invitation, ocker antics start to infect the house. First, it's the tracky dacks. Then, it's the durries. Before you know it, the working class are treading their unsophistication all over the polished floorboards ... or so it may seem.

Zoey Dawson pries open social divides with incisive comedy and exacting satire. Directed by Janice Muller, the cast members shine twice, each playing two characters—one bourgeois, one bogan.

*Australian Realness* fast-forwards from the dawn of the Howard era to revel in the shattering of expectations and artificial class divisions.

# VCE THEATRE STUDIES & DRAMA

We offer outstanding resources and workshops run by experienced educators, actors and designers to inspire and extend your VCE students.

## ENSEMBLE EXCHANGE

**Back by popular demand for the fifth year in a row!**

The VCE Ensemble Exchange provides VCE Drama students with the rare opportunity to perform part of their VCE Ensembles and discuss playmaking processes in a professional theatre. This year we will once again offer the option of working with a stimulus created specifically for this program.

**DATES** Thursday 9 May  
or Friday 10 May  
**TIME** 1.00pm – 5.30pm  
**COST** \$25 (Metro)  
\$20 (Non-metro)  
*Accompanying teachers free.*

## THE SOLO

This workshop engages students in a dynamic exploration of solo work, facilitated by an experienced VCE Teacher and features a solo performance by a professional actor. We spend a day devising, viewing and analysing works to help liberate individual voices within the prescribed structures.

**DATES** 29 Jul – 2 Aug  
and 5 – 9 Aug  
**TIME** 10.00am – 3.30pm  
**COST** \$33 (Metro)  
\$30 (Non-metro)  
*Accompanying teachers free.*

## THE MONO

This is an opportunity for students to be actors, directors and designers, as they work with professional artists and educators to share creative strategies. Students respond to monologue performances and design presentations, as they begin to develop their own interpretations for the Stagecraft Examination.

**DATES** 26 – 30 Aug  
**TIME** 10.00am – 3.30pm  
**COST** \$33 (Metro)  
\$30 (Non-metro)  
*Accompanying teachers free.*

**FOR MORE INFORMATION VISIT  
MALTHOUSETHEATRE.COM.AU/EDUCATION**



SEASON  
2019



#MALTHOUSEPROMPT



# WORKSHOPS & TOURS

AVAILABLE ON DEMAND.

## BACKSTAGE TOURS

This is your chance to explore our beautiful venue and its many and varied theatrical spaces. Uncover the history of The Coopers Malthouse and find out about the range of people who work in the theatre—onstage, backstage and beyond.

## WORKSHOPS

Design your own or choose from one of these:

### UNREEL

From screen to stage. We use cinema as a stimulus for exploring non-naturalistic theatrical devices.

### EXTREME CHARACTERS

Explore physical theatre approaches to creating highly theatrical and non-naturalistic characters.

## ARTS IMMERSION DAY

### ACCA + CHUNKY MOVE + MALTHEUSE THEATRE

Spend a full day exploring contemporary visual arts, theatre and dance. The three sessions are hosted by Malthouse Theatre, Australian Centre for Contemporary Art (ACCA): one of Australia's flagship contemporary art spaces and Chunky Move: one of Australia's leading contemporary dance companies. Join us for a day of inspiration, exploration and creativity.

### ACCA

Directly linked to the current exhibitions, ACCA's TALK THINK MAKE program is designed to encourage critical and creative thinking. Ever-changing and surprising, a visit to ACCA is always an exciting new experience for all learners.

### CHUNKY MOVE

Chunky Move dance workshops are designed to ignite physical and creative energy. With flexible content and structure, a Chunky Move workshop can be tailored to meet your group's specific needs. Suitable for all levels and ages.

# THE SUITCASE SERIES

## THE SUITCASE SERIES EMPOWERS YOUNG PEOPLE TO TACKLE THE GREATEST CHALLENGE OF THEIR GENERATION: CLIMATE CHANGE.

Year 9 and 10 students devise their own works in response to the specially commissioned script. This innovative program is a chance for students to develop and expand their theatre-making skills and to share a performance day with their peers, before viewing Malthouse Theatre's full production of the play.

### ATOMIC

**BY / Amelia Chandos Evans**

A supermarket runs out of bananas.  
A senior citizen stages a radical protest. A group of friends stumble across a whale trying to beach itself. A flower sees plastic for the first time.

A kaleidoscope of absurd and poignant vignettes, *ATOMIC* explores the power of humans to change the world—knowingly and unknowingly, for better or worse.

**DATES** 23 – 25, 28 – 31 Oct  
and 1 Nov\*

**TIMES** Term 3 in-school and  
Term 4 in-theatre day  
(9.00am – 3.30pm)

**COST** \$33 (Metro)  
\$30 (Regional)

\* Please note that this program completely sells out each year so get in early for 2019!

### ABOUT THE WRITER

Amelia Chandos Evans is a NIDA-trained playwright and dramaturg making work for adults and young audiences. Recent plays include *TRAPS: A Romantic Comedy for the Modern Sociopath* (One Word), *Lyrebird* (TRS), and *The Saturated World* (Melbourne Fringe).

Amelia co-wrote *THE MYTH PROJECT: TWIN* (Arthur/MTC NEON), *Waltzing Woolloomooloo: The Tale of Frankie Jones* (Arthur), and the award-winning play for young people *CUT SNAKE* (Arthur, Theatreworks/TRS/Brisbane Festival/Critical Stages). As dramaturg she has worked on; *Voices of Joan of Arc* (Next Wave), *The Sea Project* (Arthur, Griffin Theatre), *Wrecking* (TRS), *Dirtyland* (Arthur, The Spare Room) and *Private View* (NIDA, Theatreworks). Upcoming projects include *Mad as a Cute Snake*, the sequel to *CUT SNAKE*, for 5 to 9 year olds.











# MORE FROM SEASON 2019



## WAKE IN FRIGHT

21 JUN – 14 JUL

Is there something sinister lurking in the outback town of Bundanyabba? Under the direction of Declan Greene (*Melancholia*) and an evocative solo performance from Zahra Newman (*The Book of Mormon*), Kenneth Cook's iconic work of Australian Gothic horror is conjured onstage.



## SOLARIS

28 JUN – 21 JUL

On the other side of the galaxy, an uninhabitable world is possessed by a powerful intelligence. A crew of scientists are lost and cannot escape their past, could the planet itself be to blame? In a world premiere, Matthew Lutton and David Greig bring Stanisław Lem's sci-fi thriller to the stage.



## BLACKIE BLACKIE BROWN

29 AUG – 8 SEP

This hilarious arse-kicking comic-book superhero returns. She's raining down vengeance again, so every descendant of the men who killed her ancestors is doomed. Don't miss Australia's leading lady of live-action blaxploitation animation for one more strictly limited season.

Visit [malthousetheatre.com.au](http://malthousetheatre.com.au) for information and warning updates. Subject to change.

# SEASON CALENDAR

## TERM 1: 29 JAN TO 5 APR

Season 2019 begins (30 Jan)

2019 Education Launch (7 Feb)

Season 2019 highlight: *Barbara and the Camp Dogs* (7 Feb – 3 Mar)

## TERM 2: 23 APR TO 28 JUN

VCE Playlisted: *Cloudstreet* (6 May – 16 Jun)

Post-show forum (with Matthew Lutton): *Cloudstreet* (14 – 15 May)

VCE Workshop: Ensemble Exchange (9 – 10 May)

Malthouse Theatre recommends: *Wake in Fright* (21 Jun – 14 Jul)

Malthouse Theatre recommends: *Solaris* (28 Jun – 21 Jul) \*

## TERM 3: 15 JUL TO 20 SEP

VCE Workshop: The Solo (29 Jul – 2 Aug and 5 – 9 Aug)

VCE Workshop: The Mono (26 – 30 Aug)

Season 2019 highlight: *Australian Realness* (16 Aug – 8 Sep)

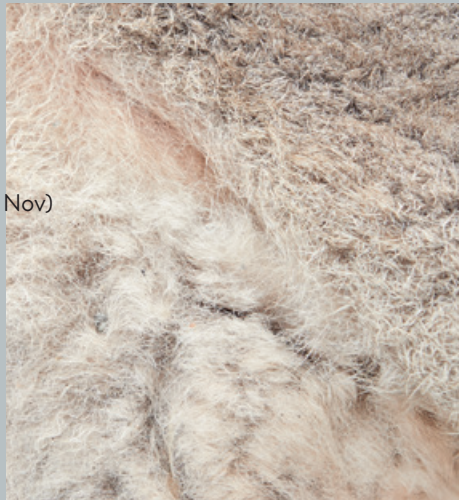
Malthouse Theatre recommends: *Blackie Blackie Brown: The Traditional Owner of Death* (29 Aug – 8 Sep)

VCE Workshop: Revisit the Play: *Cloudstreet* (24 Sep) \*

## TERM 4: 7 OCT TO 20 DEC

The Suitcase Series: *ATOMIC* (23 – 25, 28 – 31 Oct and 1 Nov)

\* During school holidays.





SEASON  
2019

# HOW TO BOOK



**SUBMIT A BOOKING THROUGH THE  
INDIVIDUAL EVENT PAGES ON THE  
MALTHOUSE THEATRE WEBSITE.**

**VISIT / [malthousetheatre.com.au/education](http://malthousetheatre.com.au/education)**

## **CONTACT US**

[education@malthousetheatre.com.au](mailto:education@malthousetheatre.com.au)

**EDUCATION  
TICKETS  
SELL FAST.  
BOOK EARLY.**

### **EDUCATION PARTNER**



Education  
and Training

### **ARTS IMMERSION PARTNERS**



**acca**

**CHUNK Y  
MOVE**

The Suitcase Series is supported by the Department of Education and Early Childhood Development. Malthouse Prompt wishes to thank a number of our Muse donors for their specific support of this program.

#MALTHOUSEPROMPT

