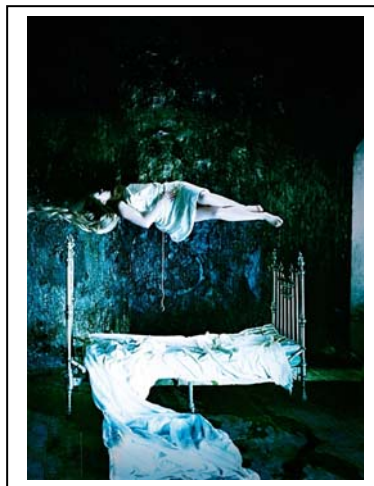

MALTHOUSE THEATRE

PRESENTS

FURIOUS MATTRESS

BECKETT THEATRE
FEBRUARY 19 – MARCH 13 2010

BY MELISSA REEVES
DIRECTED BY TIM MADDOCK
SET & COSTUME DESIGNER ANNA CORDINGLEY
LIGHTING DESIGNER PAUL JACKSON
COMPOSER & SOUND DESIGNER JETHRO WOODWARD
DRAMATURGE MARYANNE LYNCH
CAST KATE KENDALL, RITA KALNEJAIS,
ROBERT MENZIES & THOMAS WRIGHT
BESEN FAMILY ARTIST PROGRAM
(LIGHTING DESIGN): KATIE SFETKIDIS



A MALTHOUSE THEATRE COMMISSION
WORLD PREMIERE

"Just to fill you in a bit about my back-ground, I was a plumber for four years, and I like to think that's not the worst apprenticeship for an Exorcist."

In the heartland of rural Victoria and in the midst of a sweltering heatwave, a backyard exorcism is about to commence. Else (**Kate Kendall** – *Stingers*) has always been a little different, even a little difficult but when her husband Pierce (**Robert Menzies** – *Knives in Hens*) seeks support from his religious community, what he invites into their home will take the very shape of the unspeakable.

Loosely based on events that took place in country Victoria in the mid-nineties, *Furious Mattress* explores a dark, surreal underbelly that lurks below a misguided quest to 'do good'. The ordinariness of human tragedy and the propensity for the most horrific acts to co-exist with our humanity are explored in this tale of the failings of fundamentalism. This world premiere of *Furious Mattress* pushes the very limits of stagecraft into a place well beyond, as the surreal takes turns in being scary, seductive and slyly funny.

From the brilliant satirical mind of Melissa Reeves, co-writer of *Who's Afraid of the Working Class* and the award-winning film *Blessed*, comes this disarmingly hilarious and terrifying production. Directed by Reeves' long term collaborator **Tim Maddock** (STC's *The Serpent's Teeth*), *Furious Mattress* also stars **Thomas Wright** (*Balibo*, *Van Diemen's Land*) as Max, the enthusiastic ex-plumber turned local Exorcist, and **Rita Kalnejais** (*The Dictionary of Imaginary Places*).

With Malthouse Theatre Resident artists, set designer **Anna Cordingley** (*One Night The Moon*) and lighting designer **Paul Jackson** (*Happy Days*), *Furious Mattress* is a world of magnificent horror, where impossible events are rendered all-too-believable and unforgivable acts take on a disturbingly natural air.

FURIOUS MATTRESS WAS ORIGINALLY SUPPORTED BY MTC AND FURTHER DEVELOPED BY THE AUSTRALIAN NATIONAL SCRIPT WORKSHOP

Season info: MELBOURNE

Beckett Theatre, The CUB Malthouse

19 February – 13 March 2010

Opening night: Wednesday 24 February at 7.30pm

Season: Wednesday – Saturdays at 7.30pm, Sundays at 5.00pm; Tuesday 25 at 7.30pm, Tuesday 2 March at 6.30pm. Matinees – Thursday 4 March at 1.00pm and Saturday 13 March at 2.00pm.

Booking info: www.malthousetheatre.com.au / 03 9685 5111

Ticket Prices: \$16.50 – \$49 + min booking fee \$1.50

Media Contact:

Annette Vieusseux - 03 9685 5173/ m 041 4306 949/ mediamanager@malthousetheatre.com.au

Abby Allen - 03 9685 5175/ m 0435 030 755 mediaassistant@malthousetheatre.com.au

For image downloads – visit http://www.malthousetheatre.com.au/page/For_Media
